

CLINIC IN THE PARK REPORT



2015

TABLE OF CONTENTS

Contents

Message from the Director	1
Goals (2016-2019)	3
Milestones and Services	4
Steering Committee, Consultants, Staff & Collaborators	8
Donations, Sponsors, and Grants	12
Clinic Outcomes	13
Professional Presentations	15
Looking Forward & Comments	16

MESSAGE FROM THE DIRECTOR

Message from the Director



Vision. Optimal health of children

Mission. Innovative Health Collaborative Model

• Connect • Screen • Educate

Values Statement. Each child will have access to health promotion and preventive services, a quality medical home, food, housing, and education.

Dear Colleague:

Founded in 2011, we are a pediatrician led project of The Healthy Tomorrows Partnership for Children Program (2014-2019), U.S. Department of Health and Human Services, HRSA and the National American Academy of Pediatrics and Orange County Chapter. Our Collaborative represents >50 nonprofit community organizations – academic, public and private institutions and volunteer health professionals and students. <http://www.clinicinthepark.org>.

•Connect •Screen •Educate. Using public space, Clinic in the Park is an innovative, collaborative, replicable model adaptable to non-traditional sites. The Clinic offers free one-stop-shop services to: 1) connect underserved children to health services, public benefits, and community resources; 2) provide safety net screenings, including screenings for food security, health literacy, medical and dental home; and 3) deliver health education. The Clinic brings health care into the community for children victimized by health care disparities. In 2016, the “Clinic in the Park Goes Mobile” is our most promising new strategy to bring services to underserved neighborhoods.

Our financial projections show marked growth. Generous donations and awards from our many sponsors have enabled us to serve the community and improve the health of Orange County children and their families. Our collaborators are most generous with their staff, materials and volunteers – the backbone of our Clinic in the Park. In 2015, we logged 3,245 volunteer hours.

The Clinic in the Park fills a gap in our community, especially among underserved children and their families, by creating a multidisciplinary collaborative team approach to addressing the multiple needs of the children we serve. Families have not recovered from The Great

MESSAGE FROM THE DIRECTOR

Recession. One in five children now live in poverty; 50% and over 90% in some schools receive free and reduced lunch. Food insecurity is reported at 54% in OC.

Recently retired, Executive Director, Academy of Pediatrics, Errol Alden, MD cited Clinic in the Park as an example of a pediatrician community engagement project at both a District and National meeting of the American Academy of Pediatrics. Karen Remley, MD, current Executive Director, American Academy of Pediatrics cited Dr. Sandra Murray's Safe Sleep Station at Clinic in the Park in her plenary address at the National meeting October 2015.

Clinic in the Park received a 2016 Innovation Challenge Award from the California Health and Human Services Agency (CHHS) and the California Department of Public Health (CDPH), Let's Get Healthy California program We participated in the panel, "Redesigning the Health System." <http://www.chhs.ca.gov/pages/LGHCTF.aspx>.

We have been invited to speak at the 2016 national Lifesavers Conference session on "Cultivating Strategic Traffic Safety Partnerships".

We look forward to increasing our capacity and impact in 2016. We thank all our collaborators, funders and sponsors.



Phyllis Agran, MD, MPH
Founder & Executive/Medical Director
February 2, 2016

GOALS (2016-2019)

Goals (2016-2019)

I. Provide Orange County children and families free or low-cost access to health services.

II. Provide venues where community health organizations, public, private and academic institutions, and individuals collaborate to provide services in a fixed location at a fixed time (one-stop shop model).

III. Develop Clinic in the Park Satellites and mobile capacity in underserved communities as a sustainable, replicable model of health promotion.



MILESTONES AND SERVICES

Milestones and Services

March 2015 - Key to Clinic in the Park. Award to S. Mark Taper Foundation, March 8, 2015.

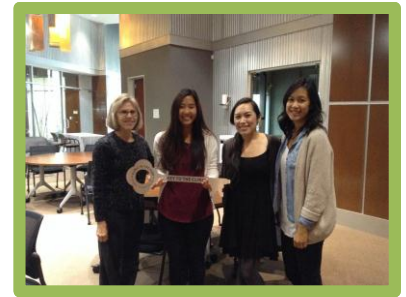
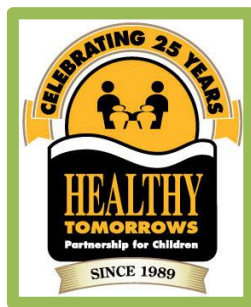
June 2015 - Visit by Melissa Stafford Jones, Director, Region IX, U.S. Department of Health and Human Services

August 2015 - Joined the Collaboration to Assist Motel Families at the Annual Back to School event, Twila Reid Park in Anaheim.

September 2015 - Madison Park Neighborhood Association (MPNA) requested that we bring the Clinic to the Madison Park, Santa Ana at their Annual Walk-A-Thon.

October 2015 - Hoag Center for Community Health and Newport Mesa Unified School District collaborated in hosting Family Health Day at the BESST Center for their largely underserved families.

November 2015 - Project Access, a non-profit, hosted families at the November 2015 Clinic in the Park at the OC Great Park. (Media Coverage)



MILESTONES AND SERVICES

Clinic in the Park Services



ACCOMPLISHMENTS

In 3 years with phased implementation, 19,000 visitors (all ages) received 38,000 discrete services, which included many who only wanted to “chat” with our doctors and other health professionals.



MILESTONES AND SERVICES

Clinic in the Park Total Key Services by Category Jan 2014 - Dec 2015		
Types of Services Provided	Jan 2014 - Dec 2014	Jan 2015 - Dec 2015
Connection to Services	1287	2663
Dental Services	693	815
Nutrition	1008	2134
Early Literacy	1781	2762
Health Chats	307	213
Childhood Development	601	589
Medical Services (includes vision)	203	416
Prevention	1655	1883
Parenting Skills	753	544
Legal Information / Resources	283	233
Child Safety	1624	1345
Hearing and Speech Screening	241	41
Allergy and Asthma	94	N/A
Emotional Health	1296	1248
First Aid / CPR	219	763
Physical Activity	533	1150
Total Services to Date	12510	16799

Comparison of 2014 to 2015, demonstrates an overall increase of 15% for services provided. **Connections** to community services and programs increased 35%. **Medical Services** increased 35%. **Immunizations** increased 90%. **Nutrition services** which included measurement and discussion of Body Mass Index, reading food labels, healthy eating options and mini consults increased 35%. Additionally, over 500 pounds of fresh produce was distributed at two Satellite Clinics. **Dental** services increased 8%. Many of the children at the Clinic Satellites have never seen a dentist, have dental caries, plaque and are in need of fluoride varnish.

MILESTONES AND SERVICES

Student Health Professional Training. UCI/CHOC Pediatric Residency Advocacy Rotation. Clinic in the Park is now part of the curriculum. Residents join the Clinic and participate in health chats, anticipatory counseling and public policy advocacy to optimize health of children. Drs. Phyllis Agran and Dr. Sandra Murray, Professors, UCI School of Medicine, mentor our pediatric residents.



The Clinic is a UCI certified practicum site for public health students who learn about community health and community-based public health research. Graduate and Undergraduate Public Health Students participate in the Clinic and Staff Team meetings. Students select a project for their course work. Many of our students are now in graduate programs in public health, nursing, and medicine. Others are employed in the health field. High school students and UCI service fraternities volunteer at the Clinic in the Park.



Clinic General Meetings. Collaborators, volunteers, community liaisons and potential collaborators attend monthly meetings to debrief on past Clinics, plan future Clinics and discuss strategies and needs of the communities. We have presentations on an emerging child health issues and rotate presentations from each Collaborator on their organizational services and key health messages. A goal is to emphasize the collective impact, synergy and referrals between and among our partners.



STEERING COMMITTEE, CONSULTANTS, STAFF & COLLABORATORS

Steering Committee, Consultants, Staff & Collaborators

STEERING COMMITTEE MEMBERS

- Phyllis Agran, MD, MPH, FAAP, Clinic in the Park Founder & Executive/Medical Director. Professor, Department of Pediatrics, UCI School of Medicine
- Ellen Olshansky, PhD, RN, WHNP-BC, FAAN, Professor, Department of Nursing Science, University of California, Irvine and Keck School of Medicine
- Kathleen Saunders, MSN, RN, CPN, CNS, Professor, Department of Nursing Science, University, of California, Irvine
- * David Núñez, MD, MPH, FAAP, Director of Family Medicine, Orange County Healthcare Agency & Title V MCH OC representative
- *Sandra Murray, MD, FAAP, Professor, Department of Pediatrics, UCI School of Medicine
- Herlinda Guzman, BA, Clinic Manager, Clinic in the Park
- Jessica Nguyen, BS, Project Assistant, Data Manager, Clinic in the Park
- John Billimek, PhD, Professor, Health Policy and Research Institute (HPRI), and Department of Internal Medicine, University of California, Irvine
- *Russell Brammer, Regional Director, Strategies Region 3, Children's Bureau
- Shahram Lotfipour, MD, MPH, Professor, Department of Emergency Medicine, University of California, Irvine School of Medicine
- Oladele Ogunseitan, PhD, MPH, Professor of Public Health & Social Ecology; Chair, Department of Population Health & Disease Prevention, University of California, Irvine
- *Letitia Clark George, MPP, Director, District Director of Public Affairs, Marketing and Government Relations at Coast Community College District
- Craig Anderson, Dr. PH, PhD. UCI, Department of Emergency Medicine, Research Specialist, UCI School of Medicine
- Marc Lerner, MD, FAAP, Medical Officer, Orange County Department of Education and Professor, UCI Department of Pediatrics, UCI School of Medicine
- Dan Cooper, MD, PhD. Associate Vice Chancellor, Institute of Clinical and Translational Science and Former Chair, Department of Pediatrics, UCI School of Medicine
- Anne Light, MD, Medical Director, Orange County, Department of Social Services

STEERING COMMITTEE, CONSULTANTS, STAFF & COLLABORATORS

*Executive Committee

STAFF

- Phyllis Agran, M.D., M.P.H. - Founder and Medical Director
- Herlinda Guzman, B.A. - Clinic Manager
- Jessica Nguyen, B.S. - Clinic Project Assistant and Data Management
- Alynne Cardoso, B.S. - Web Site Manager
- Craig Anderson, Ph.D., D.PH. - Epidemiology and Statistics
- John Billimek, PhD, Health Services and Health Disparities Researcher and Statistical expert - Evaluation.

COLLABORATORS

American Academy of Pediatrics

National and Orange County Chapter*

Healthy Tomorrows Partnership for Children, Keep Kids Safe, Reach Out and Read, No Child Hungry, Safe to Sleep

U.S. Department of Health and Human Services (HRSA). Healthy Tomorrows Partnership for Children. (with American Academy of Pediatrics national.

AccessOC

American Foundation for Suicide Prevention

Be Aware Foundation

California Academy of Nutrition and Dietetics, Orange County District

California Highway Patrol

Cal Optima

Catholic Charities of Orange County

Child Abuse Prevention Center (Bright Futures 4 Kids)*

CHOC Children's Hospital Community Education

City of Irvine

STEERING COMMITTEE, CONSULTANTS, STAFF & COLLABORATORS

Coalition of Orange County Community Health Centers

Collaboration to Assist Motel Families

Community Action Partnership of Orange County

Community Health Initiative of Orange County (CHIOC)

Great Park Farmers Market

Head Start

Healthy Smiles for Kids of OC*

Hoag Center for Community Health

Irvine Parks and Recreation: Mobile Recreation Unit

Kaiser Permanente Family Residency Program & Community Benefits

Legal Aid Society of Orange County*

Lifeline Healthcare Education

Madison Park Neighborhood Association

MOMS*

Newport-Mesa Unified School District

Orange County Department of Education Center for Healthy Kids and Schools

Orange County Social Services

Orange County Health Care Agency Family Health and Health Promotion Divisions*

Orange County Children's Therapeutic Arts Center

Orange County Safe Sleep Coalition

Orangewood Foundation, Bridges for Newborns

Project Access

Providence Speech and Hearing

RAISE Foundation*

Regional Center of Orange County

STEERING COMMITTEE, CONSULTANTS, STAFF & COLLABORATORS

Safe Kids Orange County

School Nurses (OC)

THINK Together, Early Literacy Program*

Tustin Unified School District & City of Tustin

University of California, Irvine (UCI) School of Medicine

Pediatrics *

Family Medicine

Emergency Medicine*

Trauma Services

Health Education

Burn Center,

Institute for Clinical and Translational Science

Nursing Program *

Public Health

Pediatric Exercise Research Center (PERC)

UCI Student Organizations/Volunteers -

Public Health Association

Pre-Health Alliance

Flying Samaritans

Public Health Brigades

Bio 199 and PH 194 Research students

2-1-1 Orange County

Western University of Health Sciences, College of Pharmacy

WIC*

Woodbridge Walk-In - Irvine Family Care Centers

STEERING COMMITTEE, CONSULTANTS, STAFF & COLLABORATORS

High School Volunteers - Woodbridge, Irvine, Tesoro

*Founding Faculty

We take this opportunity to especially thank our fiscal sponsor, OneOC and their outstanding staff:

Daniel McQuaid, CEO/President

Valerie Fryer, Director of Finance

Randa Wren, Bookkeeper

Stacy Brooks, HR Manager

Marci Tillison, Financial Analyst

DONATIONS, SPONSORS, AND GRANTS

Donations, Sponsors, and Grants

Clinic in the Park is made possible by the following new donors, sponsors, and/or grants:

Angels Baseball Foundation

Healthy Tomorrows Partnership for Children Program (US. Dept. of Health & Human Services, HRSA, Federal 5-year award with required 2:1 match)

Hoag Center for Healthy Living

Kaiser Permanente Community Benefit Program

Pacific Life Foundation

Ronald McDonald House Charities of Southern California

S. Mark Taper Foundation

Wells Fargo Community Connections

Wells Fargo

Woodbridge Walk-In

Private Donations



CLINIC OUTCOMES

Clinic Outcomes

All Clinic services are documented. Demographic and other data are collected for participating visitors. Pre- and post-assessments are conducted with participating adults/families at stations visited, to measure knowledge on the topic and intent to adopt recommended actions. Most families came just to chat with our doctors, nurses, health educators, dietitian, dental health and other professionals.



Satellites

Pilot sites were implemented in Anaheim, Tustin, Costa Mesa, and Santa Ana, CA, along with needs surveys. We pooled resources with new partners including the Collaboration to Assist Motel Families; Madison Park Neighborhood Association; Hoag Center for Community Health and the Newport-Mesa Unified School District; and the City of Tustin and the Tustin Unified School District. The Back to School outreach event hosted by the Collaboration to Assist Motel Families at Twila Reid Park, Anaheim drew 500 visitors. The Madison Park Annual Walk-A-Thon in Santa Ana, CA drew 300 visitors; and, the Family Health Day co-hosted with Hoag Center for Community Health and Newport-Mesa Unified School District in Costa Mesa, CA drew 400 visitors. Satellite Clinic visitors are almost 100% low-income and underserved.

Clinics	2014	2015
Great Park Hub	11	7
Satellites	0	7
Total Clinics	11	14

Visitors	2014	2015
Great Park Hub	4362	2485
Satellites	0	1513
Total Visitors	4362	3998

Services	2014	2015
Great Park Hub	12510	6699
Satellites	0	10100
Total Services	12510	16799

CLINIC OUTCOMES

Clinic in the Park - Demonstrating Economic Benefit

- \$1 dollar invested in fluoridation saves \$38 in dental costs.
- Every \$1 invested in food and nutrition education returns \$10 in reduced health care costs.
- Booster seat distribution for children ages 4-7 yields an estimated cost savings of \$2,700 for a cost of only \$38/booster seat.



LEAD PARTNERS/HOSTS: •Hoag •Newport Mesa Unified School District
•Clinic in the Park
COMMUNITY PARTNERS: 26 ORGANIZATIONS, 396 VOLUNTEER HOURS

COMMUNITY NEEDS ASSESSMENT (FULL RESULTS AVAILABLE)

Community	
Annual Income <\$23,000	70%
Jobless	52%
Service Needs	Bicycle Helmet 43%
	Healthy Eating Tools 33%
	Vaccines 31%
	Child Car Seats 29%
Health Care	Medical Home 27%
	Dentist 57%
	Doctor 35%
	Dietician 20%

KEY OUTCOMES (FULL REPORT AVAILABLE)

Services	
Flu Shots (ages 9-adult)	117
Child Passenger Safety Education	220
Dental Services:	
Education/Referrals	369
Fluoride treatment	34
Medical Services	362
Women's Health	510
Emotional Health	365
Referrals to Community Resources	740
Nutrition Education	580

IMPACT:

A TOTAL OF 403 VISITORS OF ALL AGES RECEIVED 5,298 DISCRETE SERVICES AND 375 POUNDS OF FREE, FRESH PRODUCE.

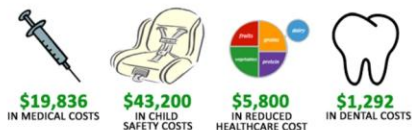
- 1 CHILD WAS SCREENED FOR SUICIDE PREVENTION AND CONNECTED TO SOCIAL WORKER
- 50% OF THOSE SURVEYED HAD INAPPROPRIATE RESTRAINTS FOR CHILD IN CAR
- NEED MORE BOOSTER SEATS
- REQUESTS FOR BICYCLE HELMETS

COMMENTS AND OBSERVATIONS:

- OUTSTANDING EVENT • BUILDS COMMUNITY CAPACITY
- REFERRALS ARE CRITICAL • NEED FOR EDUCATION

COST SAVINGS:

- \$11/FLU SHOT SAVES \$116 IN MEDICAL COSTS
- \$15/BOOSTER SEAT SAVES \$2700 IN CHILD SAFETY
- \$1/FLUORIDE TREATMENT SAVES \$38 IN DENTAL COSTS
- \$1 INVESTED IN NUTRITION EDUCATION REDUCES HEALTH CARE COSTS BY \$10



TOTAL COST SAVINGS: \$70,128

(949) 385-3067 www.ClinicinthePark.org



Healthy Tomorrows. This project is supported, in part, by Grant # H17MC26778 from the U.S. Department of Health and Human Services, Health Resources and Services Administration, Maternal and Child Health Bureau. *OneOC is a 501(c)(3) nonprofit organization

PROFESSIONAL RESEARCH PRESENTATIONS AT LOCAL, STATE AND NATIONAL MEETINGS

Professional Research Presentations at Local, State and National Meetings

- Presentations at Local, State and National Meetings Safe Kids Global Conference
- National Conference and Exhibit, Annual American Academy of Pediatrics, Community Pediatrics
- Institute of Clinical and Translational Science Research Day
- Rotary Club of Irvine
- UCI Exercise Medicine & Sport Sciences Initiative
- Clinic in the Park Collaborative Annual Update

LOOKING FORWARD & COMMENTS

Looking Forward & Comments

2016 Goals

- Sustain and expand with Clinic Satellite Strategy
- Develop new partnerships and services
- Continuous quality improvement
- Explore how technology can be used to enhance services
- No Child Hungry (promoting food security) American Academy of Pediatrics, UCI and Clinic in the Park Project
- Demonstrate impact
- Diversify and increase funding



LOOKING FORWARD & COMMENTS

Visitor Comments & Stories:



A father chatted with our child passenger safety technician/health educator and Dr Agran. He informed us that he has to put a box on the car seat so that the lap/shoulder belt fits on his daughter. We provided education regarding how to use a booster seat and gave her a booster seat.

A mother informed us that her young child was having emotional health issues and she did not know what to do. At the Clinic at BESST we connected her to Hoag Center for Community Health Mental Health Services.



A 5 year old was examined by the Healthy Smiles Dental Hygienist and found to have plaque and cavities. She was connected to the Healthy Smiles Dental Home.

LOOKING FORWARD & COMMENTS

Collaborator Comments:



What's unique about Clinic In the Park is the degree to which it was formed by a collaboration of health-related organizations. By being in one site working together, they can provide a one-stop shop for families.

Dan McQuaid

President/CEO, OneOC

Thank you for a fantastic day at the Clinic. It was wonderful to hear from excited and grateful parents on how many resources they were able to access. They were excited they got the books, fire extinguishers, car seats and great insight on a variety of topics related to their health. The families really had a great time. I am looking forward to our next visit.

Erick Fineberg

Principal, Thurman Elementary and Currie Middle School



This project is the model of a collaborative effort. It truly makes health resources accessible to the community. Most projects in the area that lightly resemble Clinic in the Park happen on an annual or at most quarterly basis. Somehow, Dr. Agran and her team manage to successfully put on an event once a month that highlights health for kids and families, puts them in touch with trained pediatricians, nurses and allied health professionals, and gives the community a reliable source for health resources. It's the most reliable and sustainable project of its kind in Orange County. As the AAP, we are happy to be affiliated as a partner.

Letitia Clark George

American Academy of Pediatrics



www.clinicinthepark.org

(949)385-3067